



# INSTRUCTION BULLETIN

No. 9010951  
Machine: T12  
Published: 06-2013  
Rev. 00

**NOTE: DO NOT DISCARD the Parts List from the Instruction Bulletin. Place the Parts List in the appropriate place in the machine manual for future reference. Retaining the Parts List will make it easier to reorder individual parts and will save the cost of ordering an entire kit.**

*NOTE: Numbers in parenthesis ( ) are reference numbers for parts listed in Bill of Materials.*

Installation instructions for **kit number 9009848 / 9009857 / 9009861**

## **SYNOPSIS:**

This kit contains the parts needed to install a front bumper / overhead guard kit onto T12 scrubbers.  
Please follow step-by-step instructions.

## **SPECIAL TOOLS / CONSIDERATIONS: NONE**

(Estimated time to complete: 4 hours)



### **PROTECT THE ENVIRONMENT**

Please dispose of packaging materials, old machine components, and hazardous fluids in an environmentally safe manner according to local waste disposal regulations.



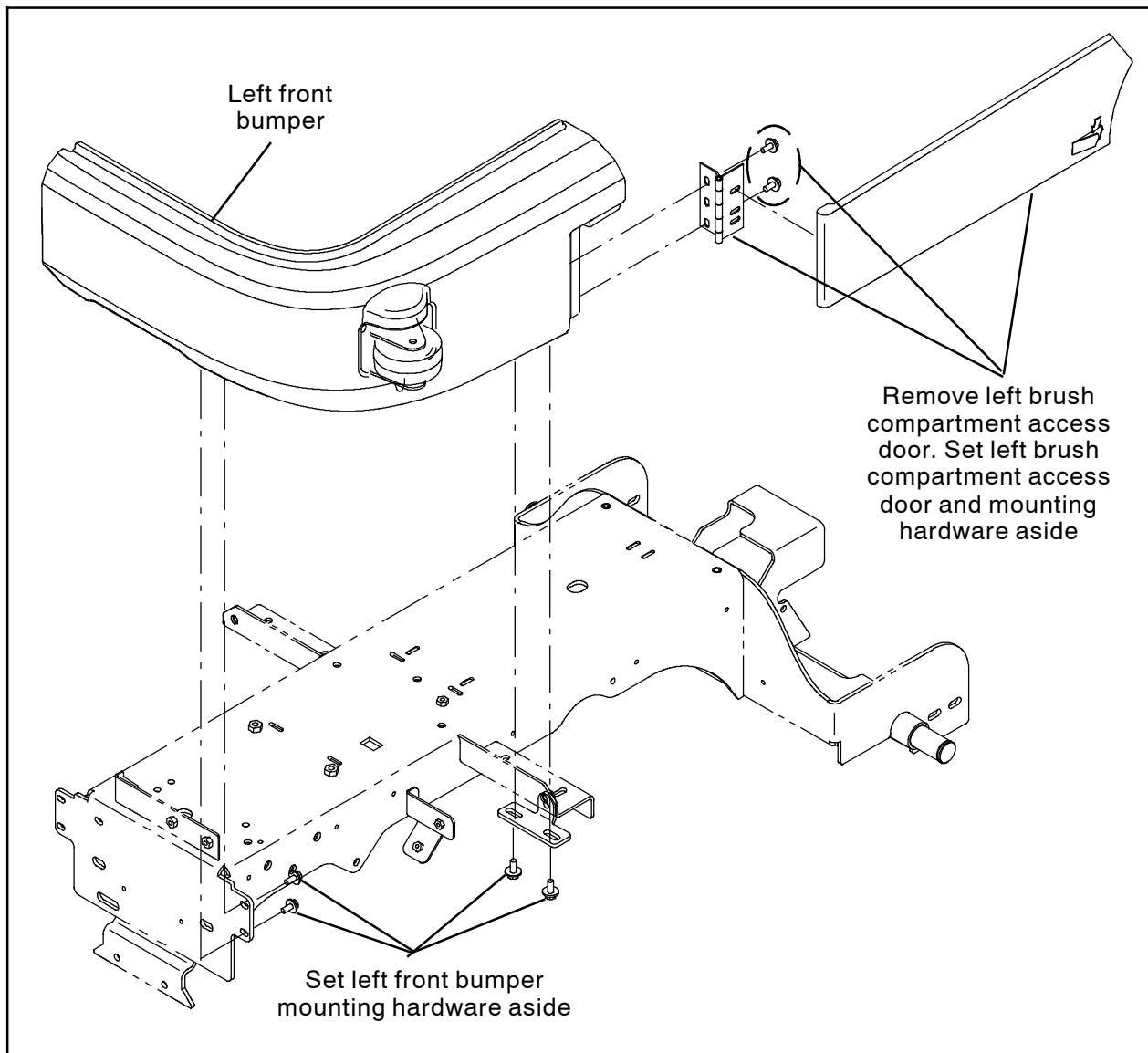
Always remember to recycle.

## **PREPARATION:**

1. Park the machine on a clean level surface, turn off the machine, and remove the key.

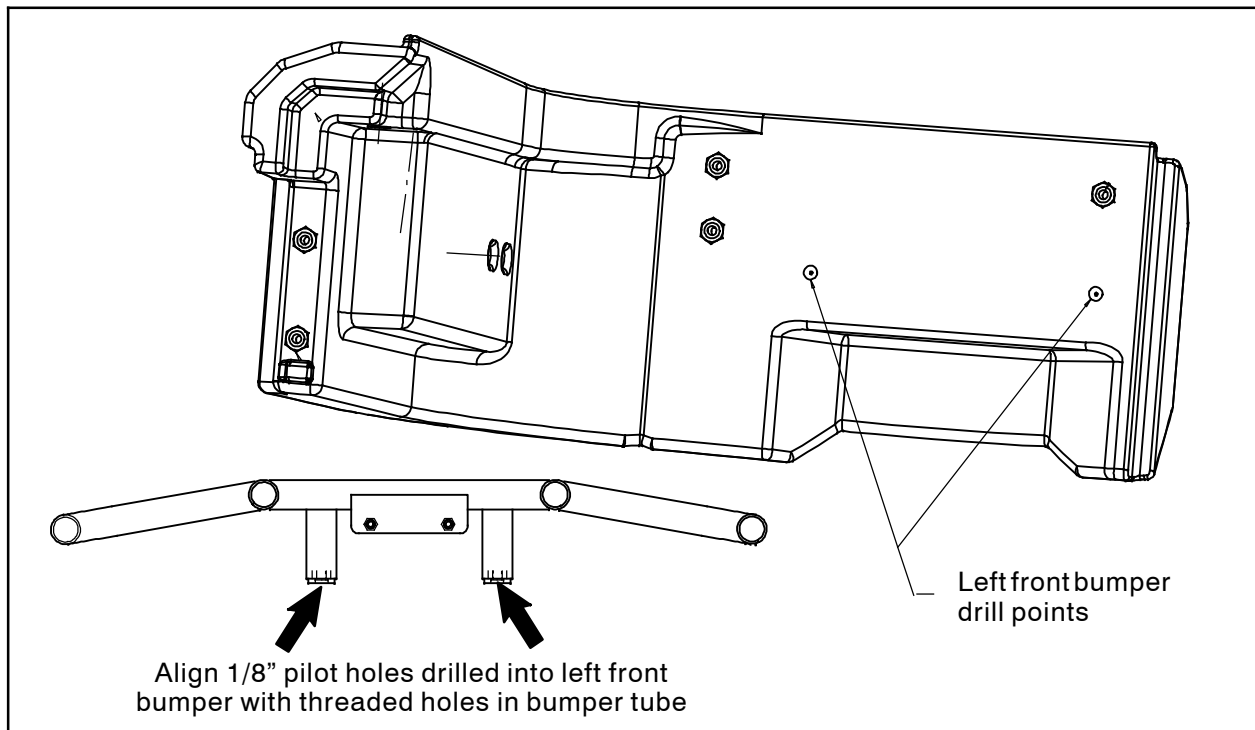
**FOR SAFETY: Before leaving or servicing machine, stop on level surface, turn off machine, and remove key.**

## INSTALLATION (Front Bumper Assembly):



**FIG. 1**

1. Remove the left brush compartment access door from the machine. Set the left brush compartment access door and all mounting hardware aside. (Fig. 1)
2. Remove the left front bumper from the machine. Set the bumper and all mounting hardware aside. (Fig. 1)



**FIG. 2**

3. Position the drill perpendicular to the back of the left front bumper and drill a 1/8" pilot hole through the two drill points located on the back of the left front bumper and through the front of the bumper. (Fig. 2)

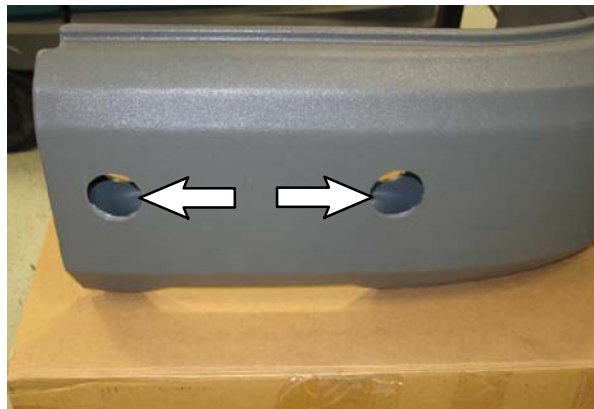
*NOTE: The drill must be held perpendicular to the back of the left front bumper to ensure the pilot holes are properly positioned on both sides of the left front bumper.*

4. Hold the bumper tube (1) up to the front of the left front bumper. The 1/8" pilot holes in the front of the left front bumper must align with the threaded holes in the bumper tubes. (Fig. 2)



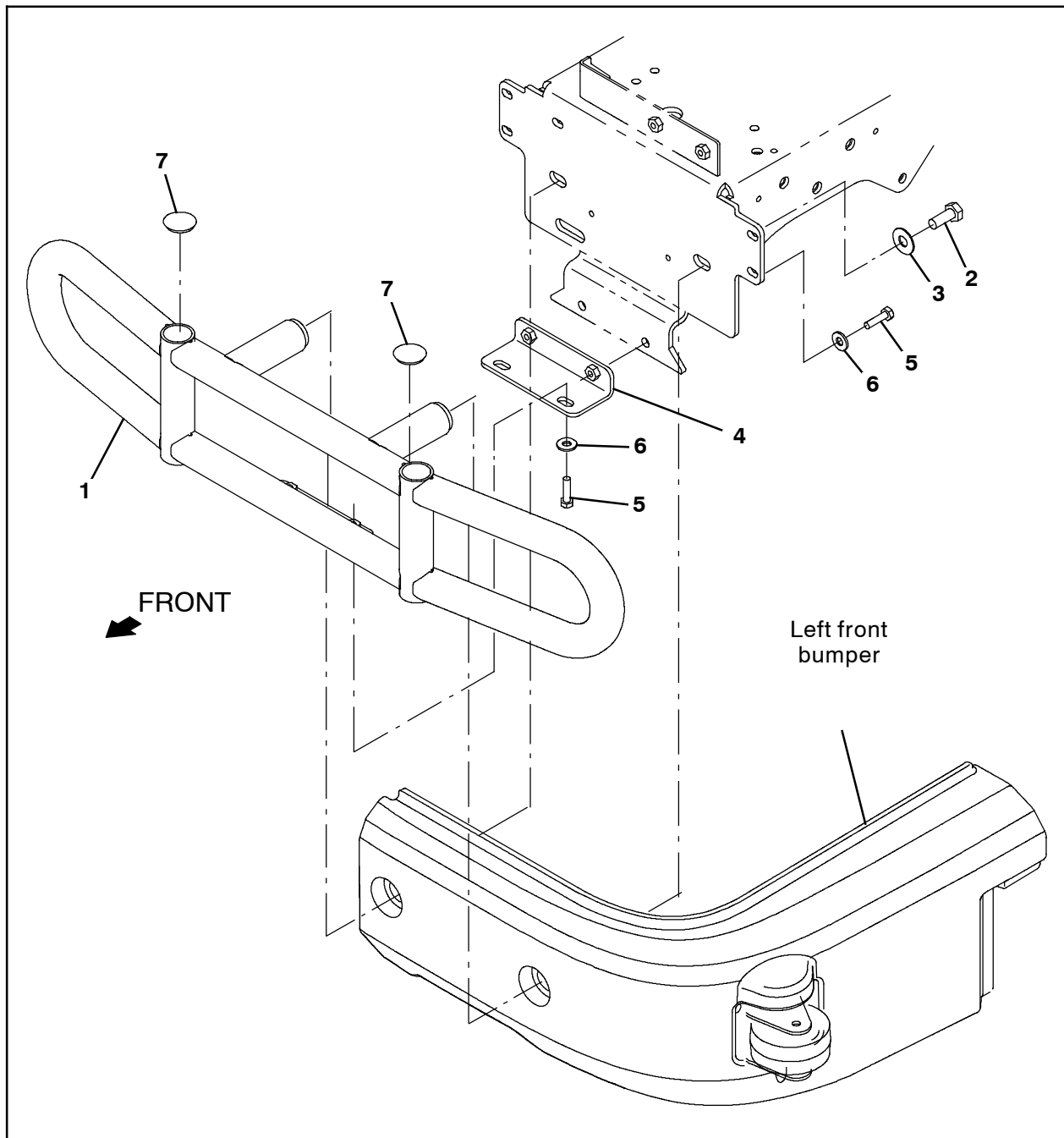
**FIG. 3**

5. Install a 1 3/4" hole saw onto the drill.
6. Position the drill perpendicular to the surface of the left front bumper being cut and cut two 1 3/4" bumper tube holes through both the front and back of the left front bumper. (Fig. 3 / Fig. 4)



**FIG. 4**

7. Reinstall the front left bumper onto the machine. (Fig. 1)
8. Reinstall the left brush compartment access door onto the machine. (Fig. 1)



**FIG. 5**

**NOTE:** ***Do Not** completely tighten any hardware used to install the front bumper assembly onto the machine. All hardware is tightened later during final adjustment.*

9. Use two M8 hex screws (5) and two flat washers (6) to install the bumper bracket (4) onto the frame of the machine. (Fig. 5)
10. Use two M12 hex screws (2) and two flat washers (3) to install the front bumper (1) onto the frame of the machine. (Fig. 5)
11. Use two M8 hex screws (5) and two flat washers (6) to secure the front bumper (1) to the bumper bracket (4). (Fig. 5)
12. If not installing overhead guard kit, insert the hole plugs (7) into the front bumper. (Fig. 5)
13. Tighten all hardware used to install the front bumper assembly onto the machine. (Fig. 5)
14. Reinstall the left brush compartment access door onto the front left bumper. (Fig. 1)

## INSTALLATION (Overhead Guard Assembly):

**NOTE:** *Do Not* completely tighten hardware used to install the overhead guard assembly onto the machine. Hardware is tightened later during final adjustment.

1. Remove the plastic plugs from the recovery tank. Discard the plastic plugs. (Fig. 6)

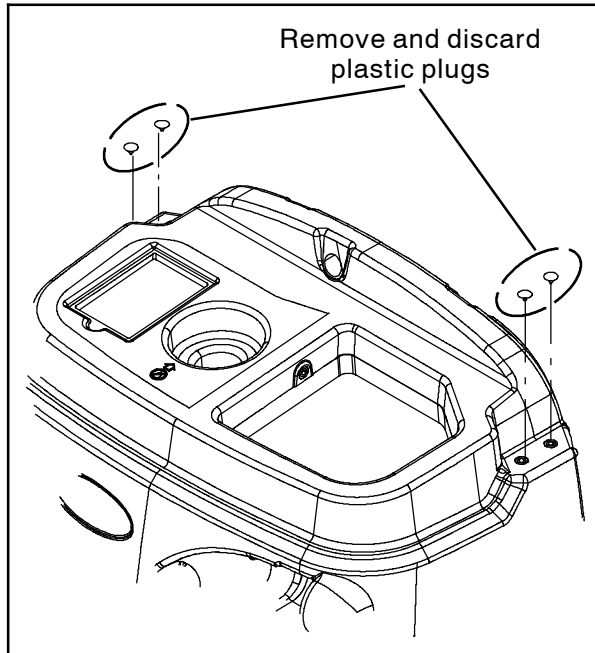


FIG. 6

2. If necessary, remove the plastic plugs from the front bumper assembly. Discard the plastic plugs. (Fig. 7)

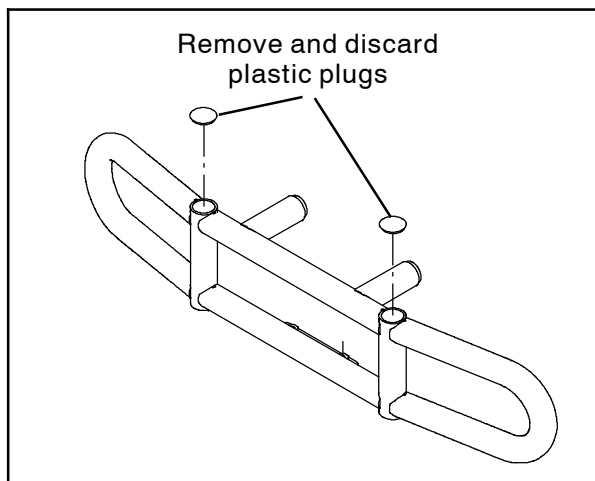


FIG. 7

3. Insert the right guard tube (1) front leg into the front bumper. (Fig. 8)
4. Use one M8 hex screw (4) and one flat washer (5) to secure the right guard tube (1) to the front bumper. (Fig. 8)
5. Insert the left guard tube (2) front leg into the front bumper. (Fig. 8)
6. Use one M8 hex screw (4) and one flat washer (5) to secure the left guard tube (2) to the front bumper. (Fig. 8)
7. Use two M8 hex screws (3) to secure the right guard tube (1) back leg to the recovery tank. (Fig. 8)
8. Use two M8 hex screws (3) to secure the left guard tube (2) back leg to the recovery tank. (Fig. 8)
9. Use four M10 hex screws (7), eight flat washers (8), and four M10 hex nuts (9) to install the overhead guard top (6) onto the right guard tube (1) and left guard tube (2). (Fig. 8)
10. Tighten all hardware used to install the overhead guard kit onto the machine. (Fig. 8)

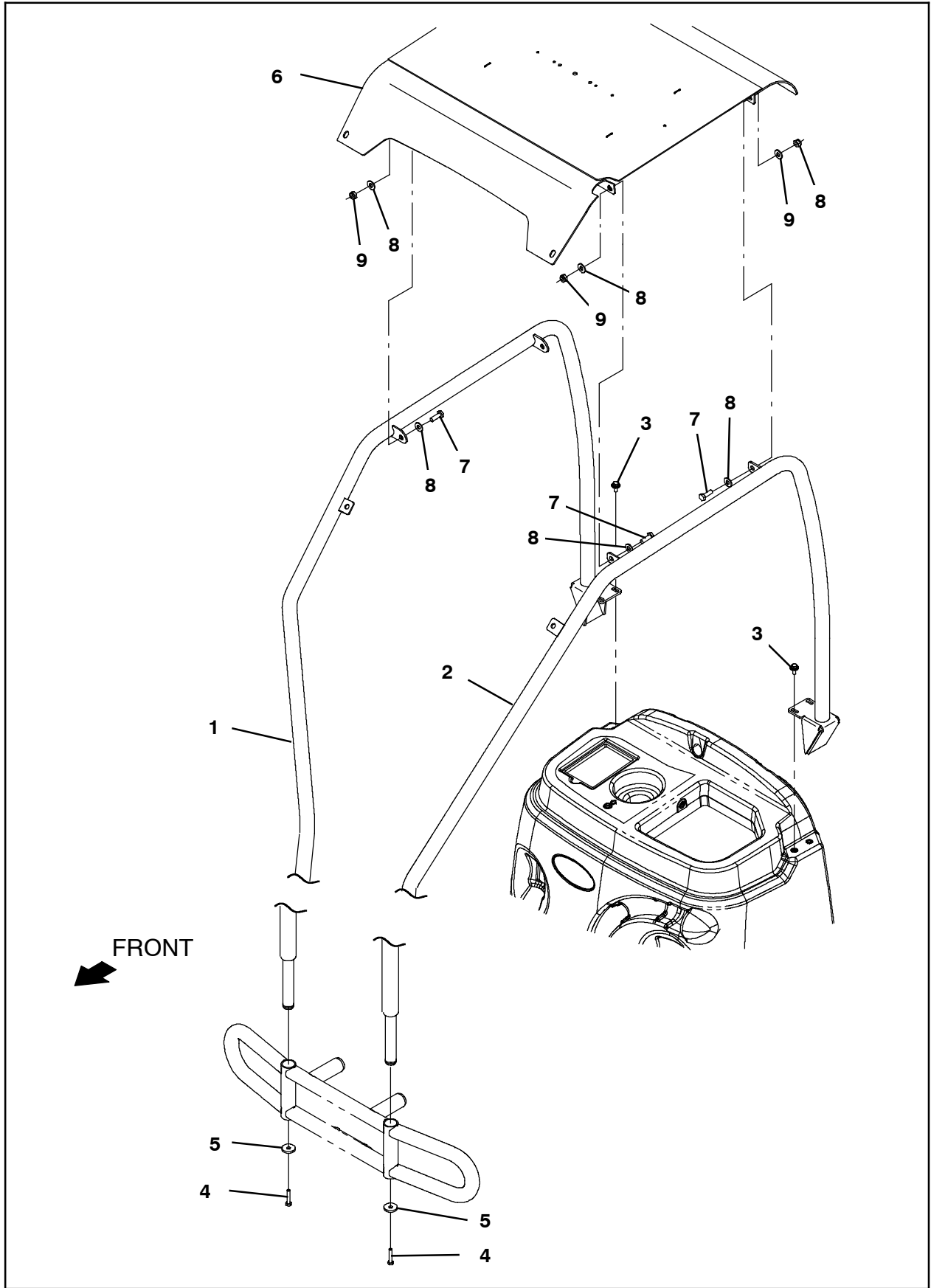


FIG. 8

---

**Bill Of Materials For Bumper Kit, Front, Hd, CI [T12] - 9009857**

	<b>Ref.</b>	<b>Tennant Part No.</b>	<b>Description</b>	<b>Qty.</b>
▽		9009857	Bumper Kit, Front, Hd, CI [T12]	1
▲	1	1201452	Tube Wldt, Bmpr	1
▲	2	12309	Screw, Hex, M12 X 1.75 X 30, SS	2
▲	3	140045	Washer, Flat, 0.51b 1.25d .06, SS	2
▲	4	1201061	Bracket Wldt, Bumper	1
▲	5	09010	Screw, Hex, M8 X 1.25 X 25, SS	4
▲	6	01685	Washer, Flat, 0.38b 0.88d .08, SS	4
▲	7	1010399	Plug, Hole, Rnd, 1.25h .18, Blk Stl	2

**Bill Of Materials For OHG Kit W/O Bumper, CI [T12] - 9009848**

	<b>Ref.</b>	<b>Tennant Part No.</b>	<b>Description</b>	<b>Qty.</b>
▽		9009848	OHG Kit W/O Bumper, CI [T12]	1
▲	1	1201550	Tube Wldt, Guard, RH	1
▲	2	1201357	Tube Wldt, Guard, LH	1
▲	3	1020341	Screw, Hex, M8 X 1.25 X 20, SS, SEMS	4
▲	4	04375	Screw, Hex, M8 X 1.25 X 40, 8.8, FI	2
▲	5	46983	Washer, Flat, 0.39b 1.38d .19, Stl, PI	2
▲	6	1201247	Guard Wldt, Top, OHG	1
▲	7	03192	Screw, Hex, M10 X 1.50 X 30, 8.8	4
▲	8	32492	Washer, Flat, 0.38, Std	8
▲	9	41430	Nut, Hex, Lock, M10 X 1.5, NI	4

**Bill Of Materials For Guard Kit, Overhead, CI [T12] - 9009861**

	<b>Ref.</b>	<b>Tennant Part No.</b>	<b>Description</b>	<b>Qty.</b>
▽		9009861	Guard Kit, Overhead, CI [T12]	1
▲	1	1201550	Tube Wldt, Guard, RH	1
▲	2	1201357	Tube Wldt, Guard, LH	1
▲	3	1020341	Screw, Hex, M8 X 1.25 X 20, SS, SEMS	4
▲	4	04375	Screw, Hex, M8 X 1.25 X 40, 8.8, FI	2
▲	5	46983	Washer, Flat, 0.39b 1.38d .19, Stl, PI	2
▲	6	1201247	Guard Wldt, Top, OHG	1
▲	7	03192	Screw, Hex, M10 X 1.50 X 30, 8.8	4
▲	8	32492	Washer, Flat, 0.38, Std	8
▲	9	41430	Nut, Hex, Lock, M10 X 1.5, NI	4
▲	10	9009901	Parts Phantom, Bumper, Front, HD	1
▲	11	1205983	Label, FOPS, Specification [T12]	1

TENNANT COMPANY  
P. O. Box 1452  
Minneapolis, MN 55440-1452